

The Flytec Range

Fast Fix Installation Guide



Fast Fix IP4X Trunking

The new and improved Fast Fix range is easy to install and saves time on site.

Fast Fix accessories are available from 2x2 to 6x6 in various bends such as 45°, 90°, crosses and tees.



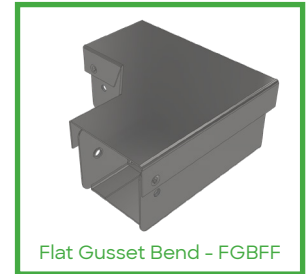
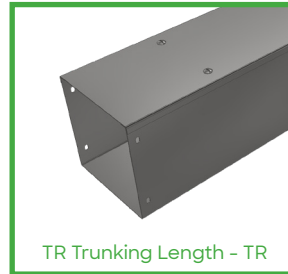
Time saving



100% recyclable



IP4X compliant as standard



Bends

EBFF - External Bend
IBFF - Internal Bend
FBFF - Flat Bend

Gusset Bends

EGBFF - External Gusset Bend
IGBFF - Internal Gusset Bend
FGBFF - Flat Gusset Bend

Square Bends

ESBFF - External Square Bend
ISBFF - Internal Square Bend
FSBFF - Flat Square Bend

Gusset Tees

EGTFF - External Gusset Tee
IGTFF - Internal Gusset Tee
FGTFF - Flat Gusset Tee

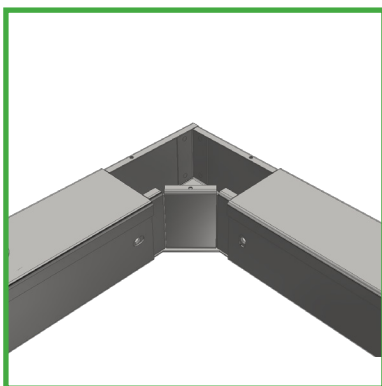
Square Tees

ESTFF - External Square Tee
ISTFF - Internal Square Tee
FSTFF - Flat Square Tee

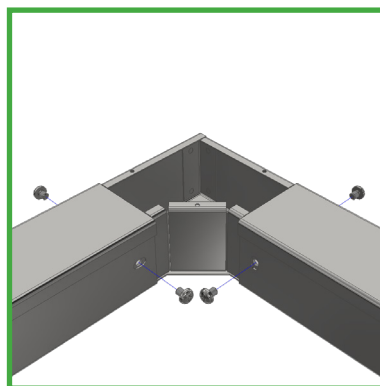
Crossovers

COFF - Crossover
COSQFF - Crossover Square

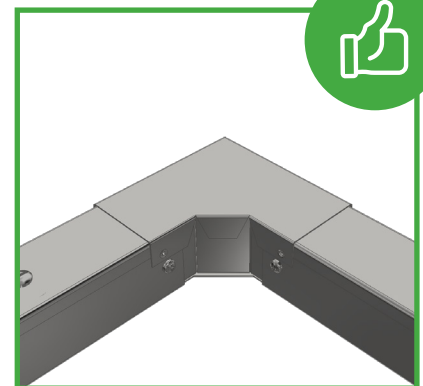
Step-by-Step Guide



1. Insert the accessory into the trunking



2. Screw the trunking into the accessory



3. Snap the Fast Fix lid over the accessory and trunking

